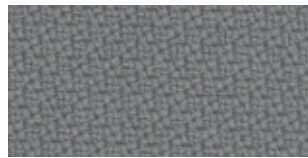


STEP™

by Gabriel



60004



60091



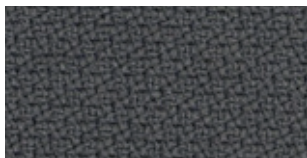
61149



60011



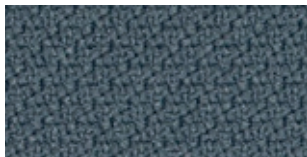
62057



60092



61103



66019



60090



61150



60999

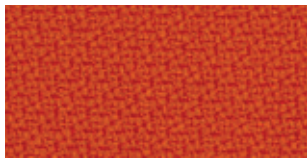


60089

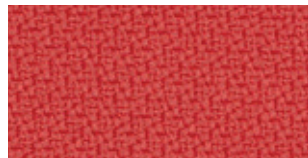


60021

Please be aware that the PDF colour shades can appear different from the real fabric colours.



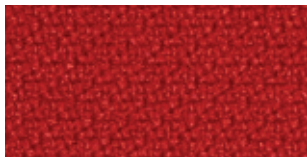
63082



64178



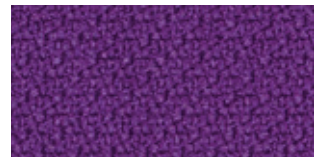
65092



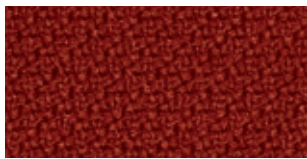
63012



64180



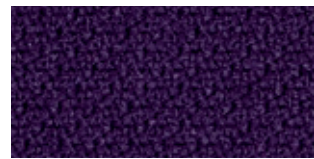
65023



63075



64179



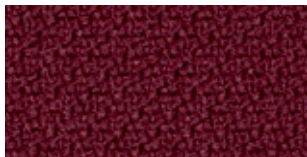
65047



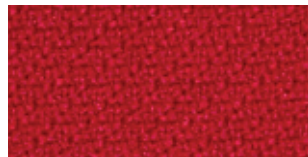
64177



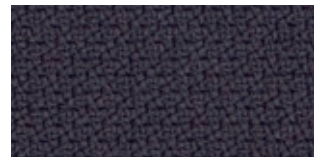
65093



64159



64013



65094



61102



65095

Please be aware that the PDF colour shades can appear different from the real fabric colours.



66152



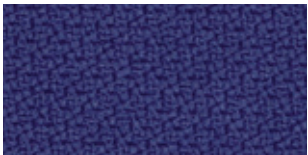
65090



66152



67004



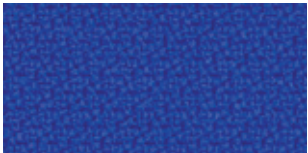
65091



66148



67072



66150



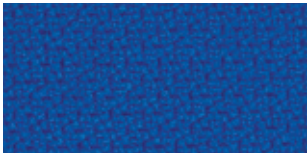
66018



67073



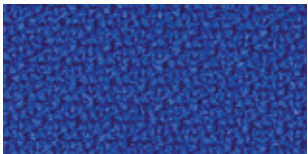
66149



66151



67007



65018



65011



68158

Please be aware that the PDF colour shades can appear different from the real fabric colours.



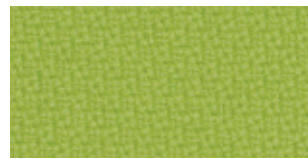
68118



62073



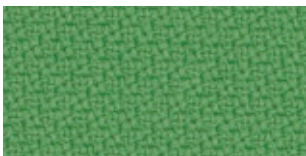
68157



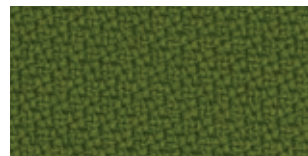
68163



68164



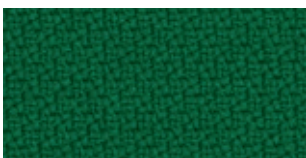
68159



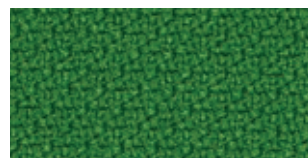
68162



68119



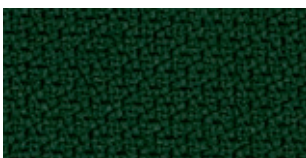
68160



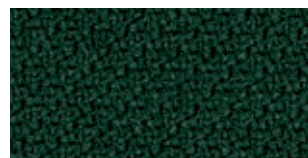
68120



68165









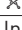
68161



68121

Please be aware that the PDF colour shades can appear different from the real fabric colours.

STEP™

Design no.		2440
Fields of application		contract
Material	Trevira CS	100%
Weight		470 g/lm · (15.16 oz/lin.yd.)
Width		140 cm · (55")
Abrasion resistance	rubs · EN ISO 12947-2 (Martindale)	100,000
Pilling	EN ISO 12945-2	4-5
Colour fastness to light	scale 1-8, max 8 · EN ISO 105 - B02	5-7
Colour fastness to rubbing	scale 1-5, max 5 · EN ISO 105x12 (wet/dry)	4-5
Maintenance	 skrinkage: max. 5%	P(W)
Flammability:	EN 1021 1&2 · BS 5852 0&1 · BS 5852 Crib 5 · DIN 4102-B1 · CAL 117-E · FAR/JAR 25.853 (a) (i) (ii) · Önorm B3825 B1-Q1 · NFP92-503-M1 · CA TB 117-2013 · BS 7176 Medium hazard · AM 18 - NF D 60-013 · IMO MSC 307 (88) Annex 1 part 8/MED Certificate IMO · UNI 9175 Class 1 EMME. Will also pass other flammability standards. Flame retardant performance is dependent upon the foam used.	
US ACT	<ul style="list-style-type: none">  AATCC 16 Light fastness  AATCC 8 or 116 wet/dry crocking  California Bulletin CAL 117-E Class 1  CA TB 117-2013  ASTM D4157-02 Wyz Abrasion (Heavy Duty Upholstery)  ASTM D3511 Pilling 	<ul style="list-style-type: none"> pass pass pass pass pass pass
Design/Colours	Inger Mosholt Nielsen / Dorthe Helm	
Subject to changes and colour differences		

